

# The Courts at Montevino

Kingfisher, OK



# The Courts at Montevino

Kingfisher, OK

Lot	Block	Address	Floor Plan	Bedrooms	Bathrooms /Half Bath	SqFt	Price
1	1	800 Chateau Court	Caldwell	3+ (Study Room & Bonus Space)	2/1	1740	\$268,060
1	2	801 Chateau Court	Newport	3+ (Study Room & Bonus Space)	2/1	1740	\$268,060
2	1	802 Chateau Court	Camden	3	2	1639	\$238,516
2	2	803 Chateau Court	Camden	3	2	1639	\$238,516
3	1	804 Chateau Court	Camden	3	2	1639	\$238,516
4	2	807 Chateau Court	Camden	3	2	1639	\$238,516
5	1	808 Chateau Court	Kingfisher	4	2/1	1832	\$266,308
5	2	809 Chateau Court	Kingfisher	4	2/1	1832	\$266,308
6	1	810 Chateau Court	Newport	3+ (Study Room & Bonus Space)	2/1	1740	\$268,060
10	3	801 Venice Court	Caldwell	3+ (Study Room & Bonus Space)	2/1	1740	\$268,060
9	2	802 Venice Court	Camden	3	2	1639	\$238,516
8	2	804 Venice Court	Camden	3	2	1639	\$238,516
8	3	805 Venice Court	Camden	3	2	1639	\$238,516
7	2	806 Venice Court	Kingfisher	4	2/1	1832	\$266,308
6	2	808 Venice Court	Camden	3	2	1639	\$238,516
6	3	809 Venice Court	Kingfisher	4	2/1	1832	\$266,308
5	3	811 Venice Court	Newport	3+ (Study Room & Bonus Space)	2/1	1740	\$268,060
2	3	1004 Milan Lane	Kingfisher	4	2/1	1832	\$266,308
3	3	1006 Milan Lane	Caldwell	3+ (Study Room & Bonus Space)	2/1	1740	\$268,060
4	3	1008 Milan Lane	Lancaster	3	2	1700	UNDER CONTRACT

## Price Sheet

*The Courts at Montevino*  
Kingfisher, OK

Kingfisher, OK



# Sitemap

Pricing available on select inventory homes. Prices are subject to change at any time without prior notice or obligation. The square footage dimensions are approximate. Home and community information including pricing, included features, incentives, product brands, terms, availability and amenities are subject to change prior to sale at any time without notice or obligation. All content shown in any of our printed material or websites, including but not limited to videos, images, and articles, are available for informational and educational purposes only. Tivoli Homes, LLC does not make any representation or warranties to the products, materials, applicability, or completeness of this presentation content, infographic and articles. This also includes any sites listed, shown or linked to. The Owner of Tivoli Homes, LLC is a licensed Real Estate Broker.



# The Courts at Montevino

Kingfisher, OK



## CALDWELL TWO STORY SINGLE FAMILY



3 Bedroom  
Plus Study Room &  
Bonus Space



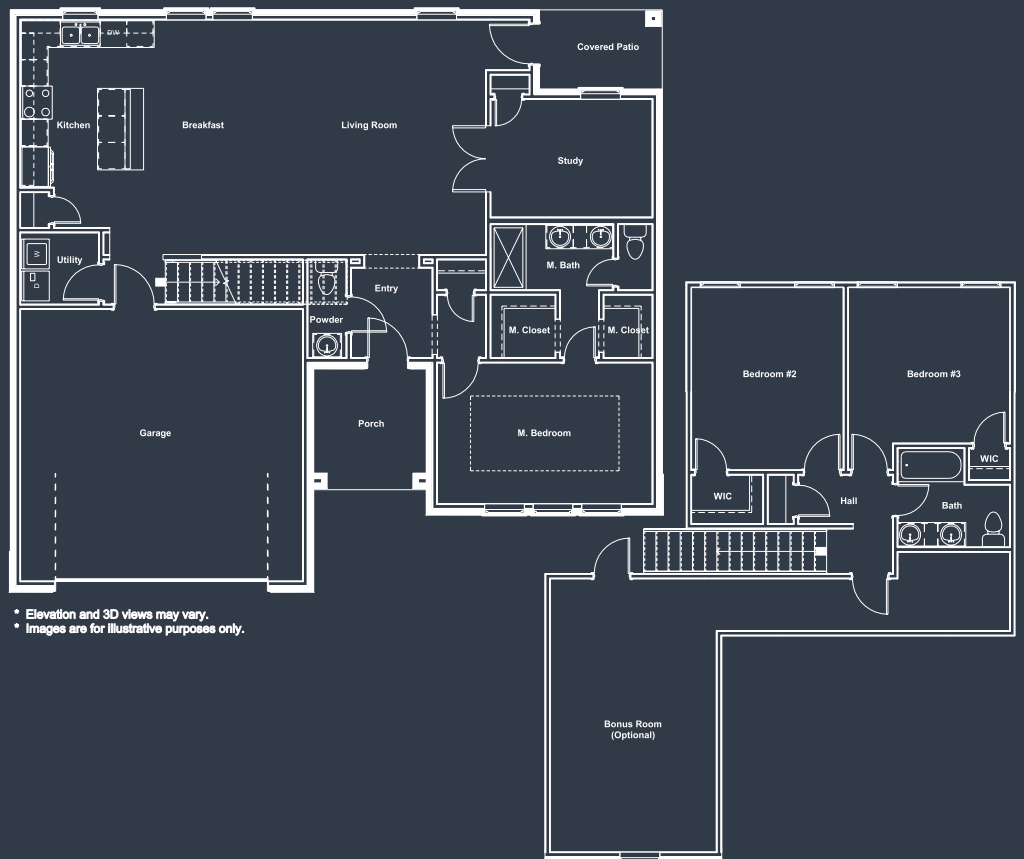
2.5 Bathroom



2 Car Garage



1740 SqFt



PRICE

\$268,060



# The Courts at Montevino

Kingfisher, OK



## CAMDEN

SINGLE STORY  
SINGLE FAMILY



3 Bedroom



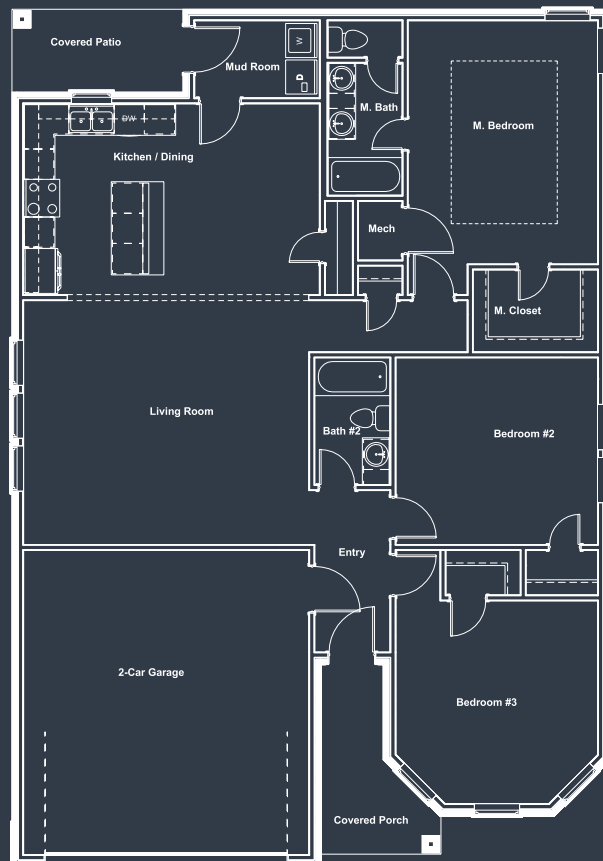
2 Bathroom



2 Car Garage



1639 SqFt



PRICE

\$238,516

# The Courts at Montevino

Kingfisher, OK



## KINGFISHER

TWO STORY  
SINGLE FAMILY



4 Bedroom



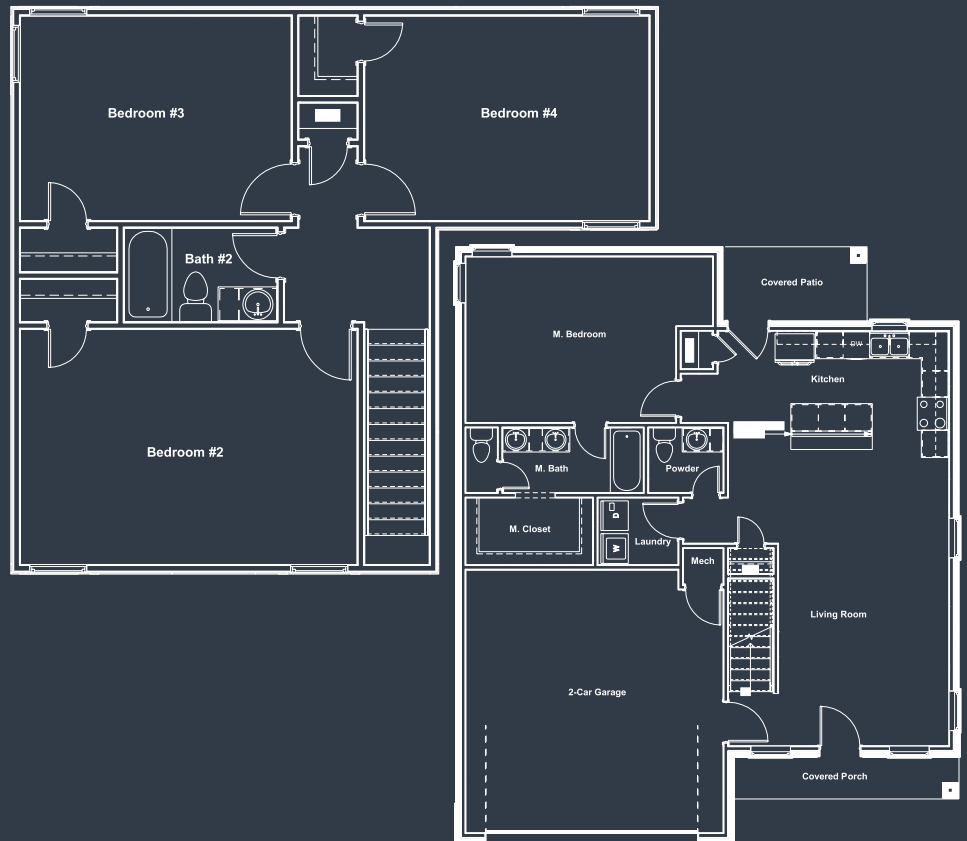
2.5 Bathroom



2 Car Garage



1832 SqFt



PRICE

\$266,308

# The Courts at Montevino

Kingfisher, OK



## LANCASTER

SINGLE STORY  
SINGLE FAMILY



3 Bedroom  
With Den /  
Sitting Room



2.5 Bathroom



2 Car Garage



1700 SqFt



PRICE

\$244,800



# The Courts at Montevino

Kingfisher, OK



## NEWPORT

TWO STORY  
SINGLE FAMILY



3 Bedroom  
Plus Study Room &  
Bonus Space



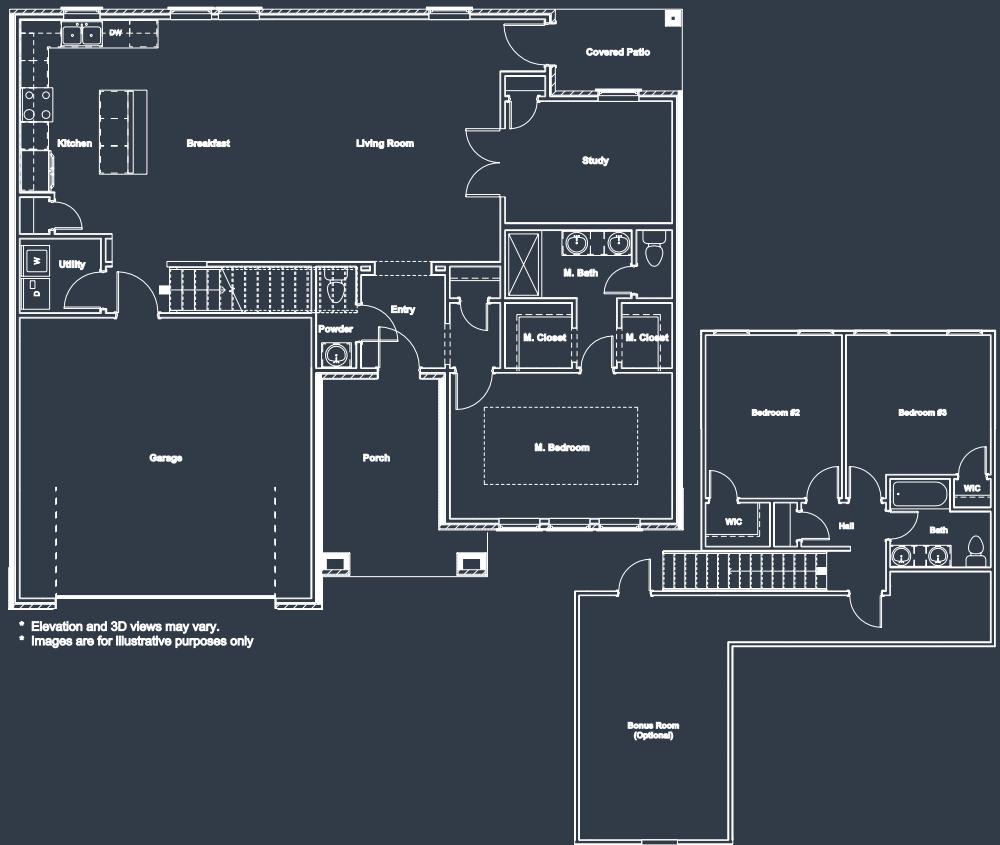
2.5 Bathroom



2 Car Garage



1740 SqFt



PRICE

\$268,060

# The Courts at Montevino

Kingfisher, OK

## Interior Finishes

\*9' Ceilings in Living Room & Master Bedroom  
 Ceiling Fans in Multiple Rooms  
 Walk-In Master Closet  
 Master Shower Pan with Ceramic Tile  
 Cultured Marble Vanity Tops  
 Dual Vanity Sinks in the Master Bath  
 Ceramic Tile Flooring in Kitchen & Bathrooms  
 Popular Cut Pile Carpet in Other Areas  
 Quartz Countertops in Kitchen with Undermount Sink  
 Subway Style Kitchen Backsplash  
 Garbage Disposal  
 Built-In Ice Maker Water Connection  
 Matching Stove, Microwave & Dishwasher  
 Pre-Wired with CAT V & Internet  
 Wired Garage Door Opener

## Exterior Construction

Brick & Siding  
 Architectural Shingles  
 Two Exterior Hose Bibs  
 Weatherproof GFCI Protected Outlets  
 Wide 3' Sidewalk to Front Door  
 Two Car Driveway  
 Upgraded Fixtures Throughout  
 Upgraded Door & Hardware  
 Sod

## Quality Construction

PEX Pipe Plumbing Throughout  
 Borate Treated Bottom Plate (Arsenic Free)  
 Post-Tension Slab Foundation  
 Textured & Painted Interior Garage Walls  
 Attic Access

## Energy Efficient

OG&E Positive Energy Home Program  
 R15 Blown Fiberglass Insulation  
 R39 Blown Insulation in the Attic  
 Fully Vented Attic  
 Energy Star Qualified

# Home Features