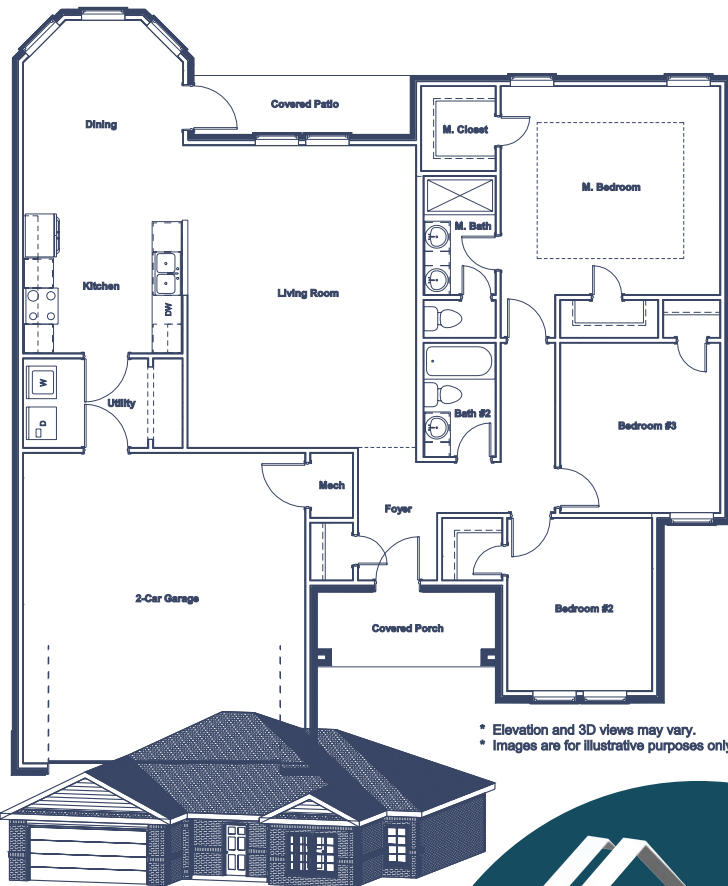


# Indian Plains

PHASE IV

## Huntington

1614 SQFT



\* Elevation and 3D views may vary.  
\* Images are for illustrative purposes only.

### Features

SINGLE FAMILY HOME, SINGLE STORY



3

BEDROOMS



2

BATHROOMS



2

CAR GARAGE

THIS STUNNING HOME FEATURES A DURABLE FULL BRICK EXTERIOR WITH SLEEK HARDIE-PLANK EAVES, A HIGH-QUALITY ASPHALT ARCHITECTURAL ROOF, AND A SOLID POST-TENSION CONCRETE SLAB FOUNDATION. ADDITIONALLY, IT IS PROUDLY CERTIFIED AS AN OG&E ENERGY POSITIVE HOME, ENSURING ENERGY EFFICIENCY AND SUSTAINABILITY.

PRICE

\$222,732

info@tivolihomes.net



Phone: 580.277.1144

Pricing available on select inventory homes. Prices are subject to change at any time without prior notice or obligation. The square footage dimensions are approximate. Home and community information including pricing, included features, incentives, product brands, terms, availability and amenities are subject to change prior to sale at any time without notice or obligation. All content shown in any of our printed material or websites, including but not limited to videos, images, and articles, are available for informational and educational purposes only. Tivoli Homes, LLC does not make any representation or warranties to the products, materials, applicability, or completeness of this presentation content, infographic and articles. This also includes any sites listed, shown or linked to. The Owner of Tivoli Homes, LLC is a licensed Real Estate Broker.