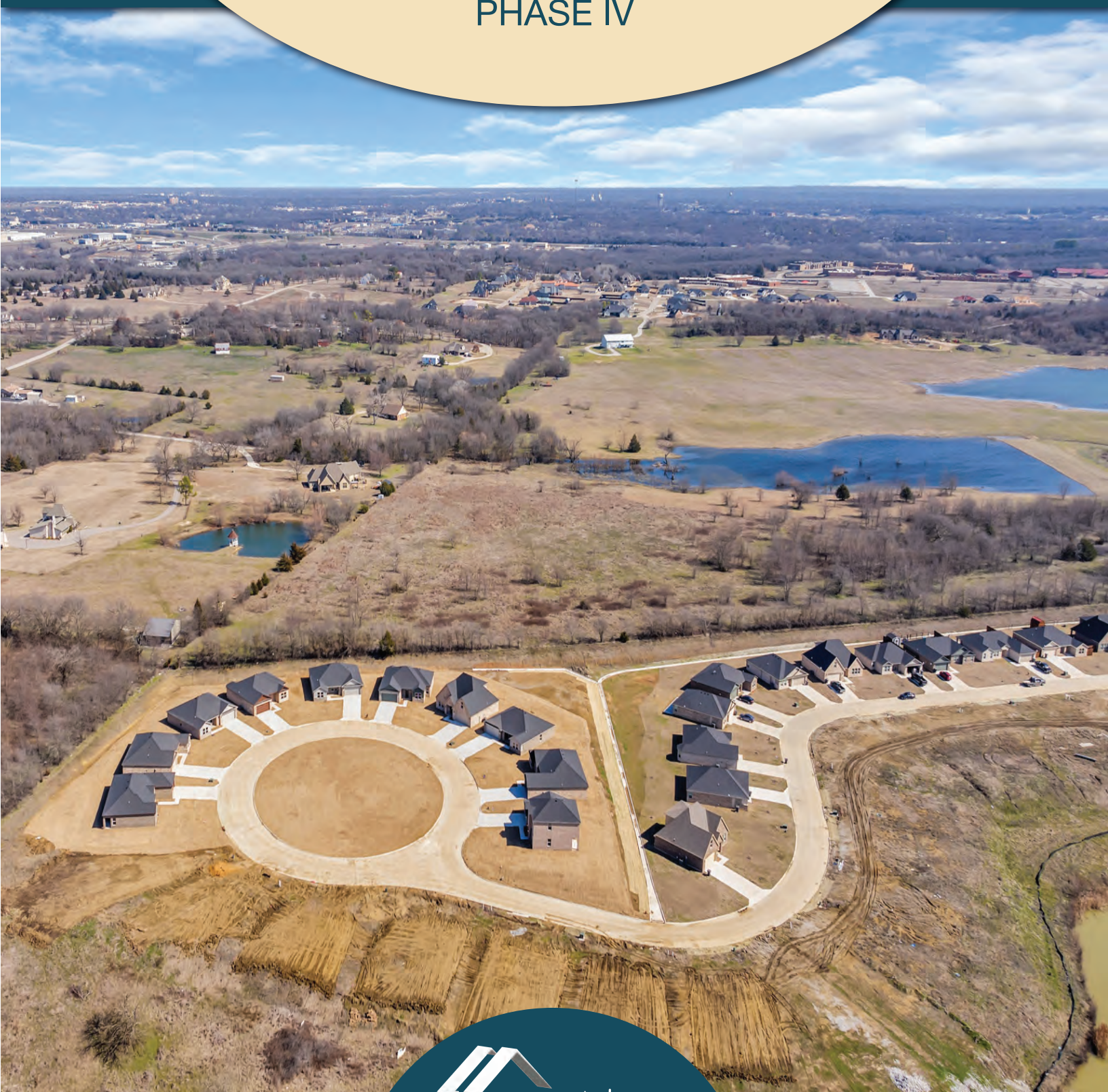


Indian Plains

PHASE IV



info@tivolihomes.net



Phone: 580.277.1144

Pricing available on select inventory homes. Prices are subject to change at any time without prior notice or obligation. The square footage dimensions are approximate. Home and community information including pricing, included features, incentives, product brands, terms, availability and amenities are subject to change prior to sale at any time without notice or obligation. All content shown in any of our printed material or websites, including but not limited to videos, images, and articles, are available for informational and educational purposes only. Tivoli Homes, LLC does not make any representation or warranties to the products, materials, applicability, or completeness of this presentation content, infographic and articles. This also includes any sites listed, shown or linked to. The Owner of Tivoli Homes, LLC is a licensed Real Estate Broker.

Indian Plains

PHASE IV

Price Sheet

-ARDMORE, OK-

Lot	Address	Floor Plan	Bedrooms	Bathrooms /Half Bath	SqFt	Price
38	717 Indian Plains Rd	Lancaster	3	2	1700	UNDER CONTRACT
39	721 Indian Plains Rd	Huntington	3	2	1614	\$222,732
40	725 Indian Plains Rd	Willow	4	2/1	1999	\$275,862
41	729 Indian Plains Rd	Newport	3+ (Study Room & Bonus Space)	2/1	1800+	\$263,400
42	733 Indian Plains Rd	Willow	4	2/1	1999	\$275,862
43	737 Indian Plains Rd	Huntington	3	2	1614	\$222,732
44	803 Indian Plains Rd	Lancaster	3	2	1700	\$234,600
45	807 Indian Plains Rd	Elm	3	2	1434	UNDER CONTRACT
46	811 Indian Plains Rd	Newport	3+ (Study Room & Bonus Space)	2/1	1800+	<i>Sold</i>
47	815 Indian Plains Rd	Willow	4	2/1	1999	\$275,862
48	819 Indian Plains Rd	Lancaster	3	2	1700	<i>Sold</i>
49	823 Indian Plains Rd	Newport	3+ (Study Room & Bonus Space)	2/1	1800+	\$263,400
50	905 Indian Plains Rd	Willow	4	2/1	1999	\$275,862
51	909 Indian Plains Rd	Huntington	3	2	1614	\$222,732
52	913 Indian Plains Rd	Lancaster	3	2	1700	\$234,600
53	917 Indian Plains Rd	Elm	3	2	1434	<i>Sold</i>
54	921 Indian Plains Rd	Huntington	3	2	1614	\$222,732
55	925 Indian Plains Rd	Lancaster	3	2	1700	\$234,600

info@tivolihomes.net



Phone: 580.277.1144

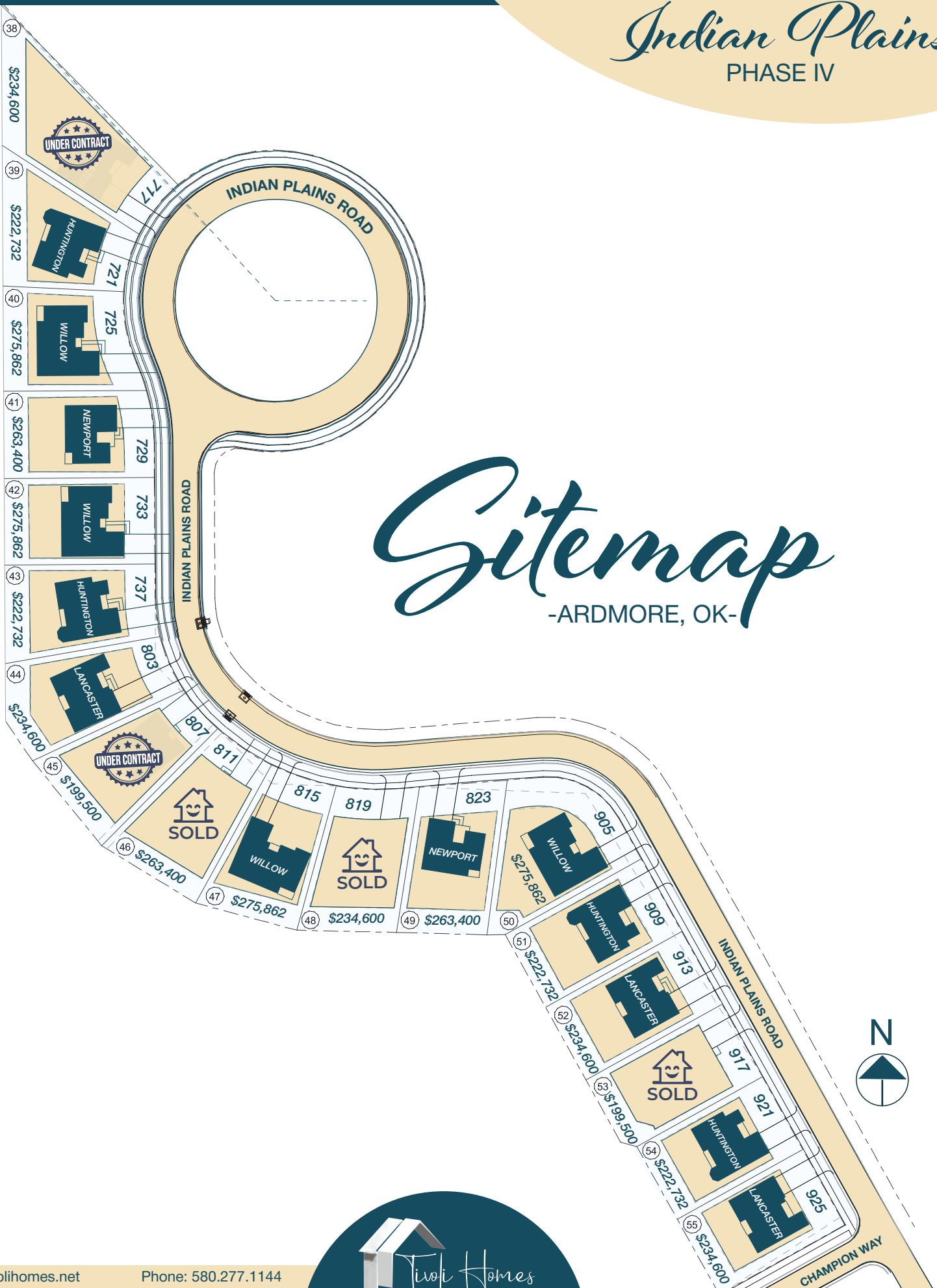
Pricing available on select inventory homes. Prices are subject to change at any time without prior notice or obligation. The square footage dimensions are approximate. Home and community information including pricing, included features, incentives, product brands, terms, availability and amenities are subject to change prior to sale at any time without notice or obligation. All content shown in any of our printed material or websites, including but not limited to videos, images, and articles, are available for informational and educational purposes only. Tivoli Homes, LLC does not make any representation or warranties to the products, materials, applicability, or completeness of this presentation content, infographic and articles. This also includes any sites listed, shown or linked to. The Owner of Tivoli Homes, LLC is a licensed Real Estate Broker.

Indian Plains

PHASE IV

Sitemap

-ARDMORE, OK-



info@tivolihomes.net

Phone: 580.277.1144



Pricing available on select inventory homes. Prices are subject to change at any time without prior notice or obligation. The square footage dimensions are approximate. Home and community information including pricing, included features, incentives, product brands, terms, availability and amenities are subject to change prior to sale at any time without notice or obligation. All content shown in any of our printed material or websites, including but not limited to videos, images, and articles, are available for informational and educational purposes only. Tivoli Homes, LLC does not make any representation or warranties to the products, materials, applicability, or completeness of this presentation content, infographic and articles. This also includes any sites listed, shown or linked to. The Owner of Tivoli Homes, LLC is a licensed Real Estate Broker.

Indian Plains

PHASE IV

Elm

1434 SQFT



Features

SINGLE FAMILY HOME, SINGLE STORY



3

BEDROOMS



2

BATHROOMS



2

CAR GARAGE

THIS STUNNING HOME FEATURES A DURABLE FULL BRICK EXTERIOR WITH SLEEK HARDIE-PLANK EAVES, A HIGH-QUALITY ASPHALT ARCHITECTURAL ROOF, AND A SOLID POST-TENSION CONCRETE SLAB FOUNDATION. ADDITIONALLY, IT IS PROUDLY CERTIFIED AS AN OG&E ENERGY POSITIVE HOME, ENSURING ENERGY EFFICIENCY AND SUSTAINABILITY.

PRICE

\$199,500

info@tivolihomes.net



Phone: 580.277.1144

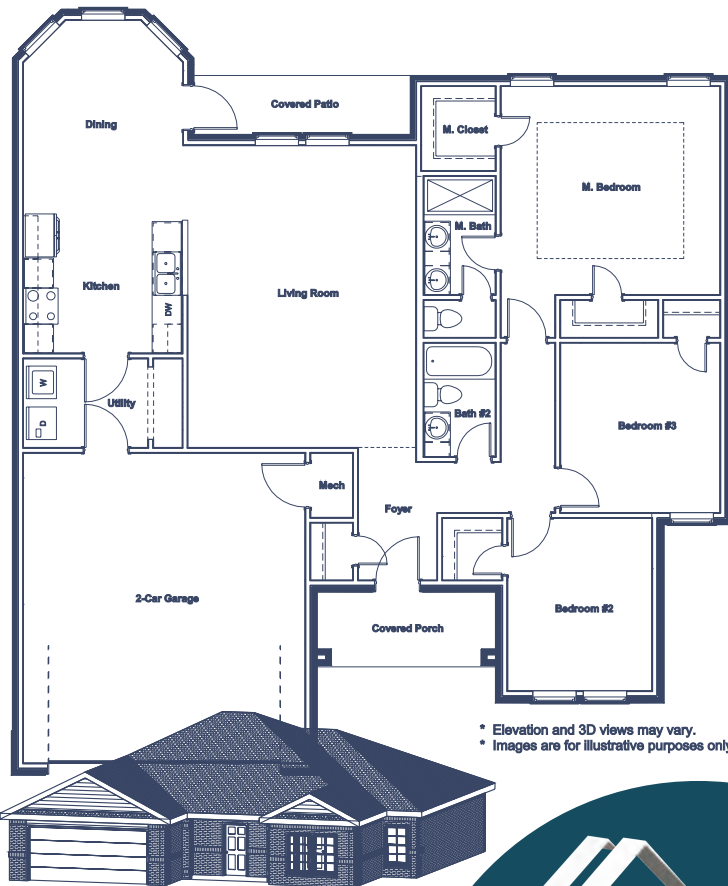
Pricing available on select inventory homes. Prices are subject to change at any time without prior notice or obligation. The square footage dimensions are approximate. Home and community information including pricing, included features, incentives, product brands, terms, availability and amenities are subject to change prior to sale at any time without notice or obligation. All content shown in any of our printed material or websites, including but not limited to videos, images, and articles, are available for informational and educational purposes only. Tivoli Homes, LLC does not make any representation or warranties to the products, materials, applicability, or completeness of this presentation content, infographic and articles. This also includes any sites listed, shown or linked to. The Owner of Tivoli Homes, LLC is a licensed Real Estate Broker.

Indian Plains

PHASE IV

Huntington

1614 SQFT



* Elevation and 3D views may vary.
* Images are for illustrative purposes only.

Features

SINGLE FAMILY HOME, SINGLE STORY



3

BEDROOMS



2

BATHROOMS



2

CAR GARAGE

THIS STUNNING HOME FEATURES A DURABLE FULL BRICK EXTERIOR WITH SLEEK HARDIE-PLANK EAVES, A HIGH-QUALITY ASPHALT ARCHITECTURAL ROOF, AND A SOLID POST-TENSION CONCRETE SLAB FOUNDATION. ADDITIONALLY, IT IS PROUDLY CERTIFIED AS AN OG&E ENERGY POSITIVE HOME, ENSURING ENERGY EFFICIENCY AND SUSTAINABILITY.

PRICE

\$222,732

info@tivolihomes.net



Phone: 580.277.1144

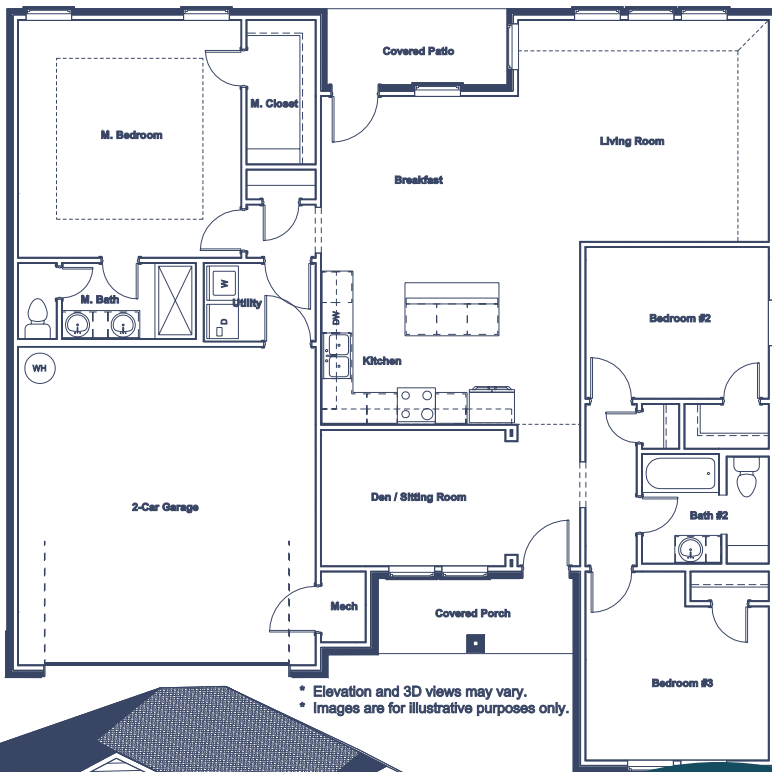
Pricing available on select inventory homes. Prices are subject to change at any time without prior notice or obligation. The square footage dimensions are approximate. Home and community information including pricing, included features, incentives, product brands, terms, availability and amenities are subject to change prior to sale at any time without notice or obligation. All content shown in any of our printed material or websites, including but not limited to videos, images, and articles, are available for informational and educational purposes only. Tivoli Homes, LLC does not make any representation or warranties to the products, materials, applicability, or completeness of this presentation content, infographic and articles. This also includes any sites listed, shown or linked to. The Owner of Tivoli Homes, LLC is a licensed Real Estate Broker.

Indian Plains

PHASE IV

Lancaster

1700 SQFT



* Elevation and 3D views may vary.
* Images are for illustrative purposes only.



Features

SINGLE FAMILY HOME, SINGLE STORY



3

BEDROOMS
WITH DEN / SITTING ROOM



2

BATHROOMS



2

CAR GARAGE

THIS STUNNING HOME FEATURES A DURABLE FULL BRICK EXTERIOR WITH SLEEK HARDIE-PLANK EAVES, A HIGH-QUALITY ASPHALT ARCHITECTURAL ROOF, AND A SOLID POST-TENSION CONCRETE SLAB FOUNDATION. ADDITIONALLY, IT IS PROUDLY CERTIFIED AS AN OG&E ENERGY POSITIVE HOME, ENSURING ENERGY EFFICIENCY AND SUSTAINABILITY.

PRICE

\$234,600

info@tivolihomes.net



Phone: 580.277.1144

Pricing available on select inventory homes. Prices are subject to change at any time without prior notice or obligation. The square footage dimensions are approximate. Home and community information including pricing, included features, incentives, product brands, terms, availability and amenities are subject to change prior to sale at any time without notice or obligation. All content shown in any of our printed material or websites, including but not limited to videos, images, and articles, are available for informational and educational purposes only. Tivoli Homes, LLC does not make any representation or warranties to the products, materials, applicability, or completeness of this presentation content, infographic and articles. This also includes any sites listed, shown or linked to. The Owner of Tivoli Homes, LLC is a licensed Real Estate Broker.

Indian Plains

PHASE IV

Newport

1800+ SQFT



* Elevation and 3D views may vary.
* Images are for illustrative purposes only



Features

SINGLE FAMILY HOME, TWO STORY



3

BEDROOMS

PLUS MEDIA & BONUS SPACE



2.5

BATHROOMS



2

CAR GARAGE

THIS STUNNING HOME FEATURES A DURABLE FULL BRICK EXTERIOR WITH SLEEK HARDIE-PLANK EAVES, A HIGH-QUALITY ASPHALT ARCHITECTURAL ROOF, AND A SOLID POST-TENSION CONCRETE SLAB FOUNDATION. ADDITIONALLY, IT IS PROUDLY CERTIFIED AS AN OG&E ENERGY POSITIVE HOME, ENSURING ENERGY EFFICIENCY AND SUSTAINABILITY.

PRICE

\$263,400

info@tivolihomes.net



Phone: 580.277.1144

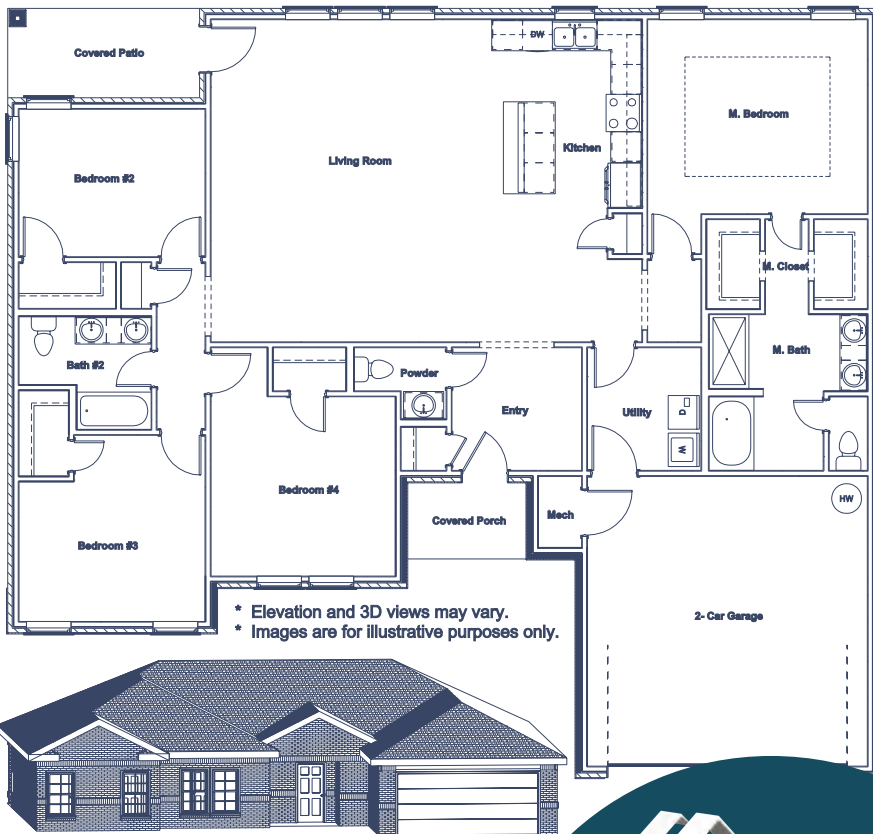
Pricing available on select inventory homes. Prices are subject to change at any time without prior notice or obligation. The square footage dimensions are approximate. Home and community information including pricing, included features, incentives, product brands, terms, availability and amenities are subject to change prior to sale at any time without notice or obligation. All content shown in any of our printed material or websites, including but not limited to videos, images, and articles, are available for informational and educational purposes only. Tivoli Homes, LLC does not make any representation or warranties to the products, materials, applicability, or completeness of this presentation content, infographic and articles. This also includes any sites listed, shown or linked to. The Owner of Tivoli Homes, LLC is a licensed Real Estate Broker.

Indian Plains

PHASE IV

Willow

1999 SQFT



Features

SINGLE FAMILY HOME, SINGLE STORY



4

BEDROOMS



2.5

BATHROOMS



2

CAR GARAGE

THIS STUNNING HOME FEATURES A DURABLE FULL BRICK EXTERIOR WITH SLEEK HARDIE-PLANK EAVES, A HIGH-QUALITY ASPHALT ARCHITECTURAL ROOF, AND A SOLID POST-TENSION CONCRETE SLAB FOUNDATION. ADDITIONALLY, IT IS PROUDLY CERTIFIED AS AN OG&E ENERGY POSITIVE HOME, ENSURING ENERGY EFFICIENCY AND SUSTAINABILITY.

PRICE

\$275,862

info@tivolihomes.net



Phone: 580.277.1144

Pricing available on select inventory homes. Prices are subject to change at any time without prior notice or obligation. The square footage dimensions are approximate. Home and community information including pricing, included features, incentives, product brands, terms, availability and amenities are subject to change prior to sale at any time without notice or obligation. All content shown in any of our printed material or websites, including but not limited to videos, images, and articles, are available for informational and educational purposes only. Tivoli Homes, LLC does not make any representation or warranties to the products, materials, applicability, or completeness of this presentation content, infographic and articles. This also includes any sites listed, shown or linked to. The Owner of Tivoli Homes, LLC is a licensed Real Estate Broker.

Indian Plains

PHASE IV

Home Features

Interior Finishes

*9' Ceilings in Living Room & Master Bedroom
Ceiling Fans in Multiple Rooms
Walk-In Master Closet
Master Shower Pan with Ceramic Tile
Cultured Marble Vanity Tops
Dual Vanity Sinks in the Master Bath
Ceramic Tile Flooring in Kitchen & Bathrooms
Popular Cut Pile Carpet in Other Areas
Quartz Countertops in Kitchen with Undermount Sink
Subway Style Kitchen Backsplash
Garbage Disposal
Built-In Ice Maker Water Connection
Matching Stove, Microwave & Dishwasher
Pre-Wired with CAT V & Internet
Wired Garage Door Opener

Exterior Construction

Brick & Siding
Architectural Shingles
Two Exterior Hose Bibs
Weatherproof GFCI Protected Outlets
Wide 3' Sidewalk to Front Door
Two Car Driveway
Upgraded Fixtures Throughout
Upgraded Door & Hardware
Trees & Sod

Quality Construction

PEX Pipe Plumbing Throughout
Borate Treated Bottom Plate (Arsenic Free)
Post-Tension Slab Foundation
Textured & Painted Interior Garage Walls
Attic Access

Energy Efficient

OG&E Positive Energy Home Program
R15 Blown Fiberglass Insulation
R39 Blown Insulation in the Attic
Fully Vented Attic
Energy Star Qualified

info@tivolihomes.net



Phone: 580.277.1144

Pricing available on select inventory homes. Prices are subject to change at any time without prior notice or obligation. The square footage dimensions are approximate. Home and community information including pricing, included features, incentives, product brands, terms, availability and amenities are subject to change prior to sale at any time without notice or obligation. All content shown in any of our printed material or websites, including but not limited to videos, images, and articles, are available for informational and educational purposes only. Tivoli Homes, LLC does not make any representation or warranties to the products, materials, applicability, or completeness of this presentation content, infographic and articles. This also includes any sites listed, shown or linked to. The Owner of Tivoli Homes, LLC is a licensed Real Estate Broker.